

Turtle Nesting Habitat

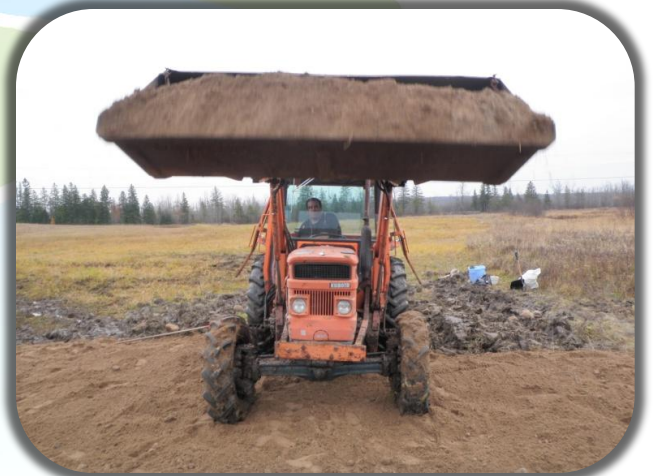
Union Creek

Seven of Ontario's eight turtle species are listed as Species at Risk. Road mortality is one of the leading threats to turtle populations; the creation of a nesting habitat provides turtles with a safe nesting location. Riparian planting along Union Creek enhances the habitat for other wildlife and increases connectivity of the natural corridor.



A property owner contacted us with concern about the high road mortality of turtles in the area. Turtles were not only frequently seen on the road, but also laid their eggs in the landowner's driveway.

We proposed the construction of a turtle nesting habitat near the creek on the property, safely away from the roads and driveway. The area had to be dug out to a depth of 30cm. We had lots of volunteers to help with the digging!



Once it was cleared, we laid out geotextile fabric over the entire habitat area. On top of this, we spread out a layer of pea gravel.

A thick layer of sand was spread over the gravel. Luckily, we had a tractor to help move sand!



After a lot of hard work, we had an ideal nesting habitat for the turtles in the area to use next spring.

The riparian area along Union Creek was planted with shrubs to enhance habitat for waterfowl and other wildlife.

Funding and In-Kind Support Generously Provided By:

- Community Stream Steward Program
- Wildlife Habitat Canada
- Ontario Species at Risk Stewardship Fund
- Volunteers
- Landowner



Community Stream Steward Program

